



WORLD'S BEST  
ALLOY BULLBARS

East Coast Bullbars (ECB Pty Ltd)

Tel: 07 3897 5700

Fax: 07 3283 1168

ecb@ecb.com.au www.ecb.com.au

29 Snook St  
Clontarf QLD 4019  
Australia

Po Box 122  
Margate QLD 4019  
Australia

BT126SY

REPLACES: 00.00.00  
REVISED: 15.12.11

## FITTING INSTRUCTIONS

### TOYOTA HILUX 09/11 on 2WD & 4WD BIG TUBE™ BAR VEHICLE FRONTAL PROTECTION SYSTEM (VFPS) FOR AIR BAG & ADR COMPLIANT VEHICLES

Check installation hardware before commencing.

1. Lift bonnet
2. Remove grille, two plastic clips and two PK self-tappers along top, pull grille forward at top enough to access and release five fixed clips along bottom inside of grille.
3. Remove bumper cover, three plastic clips along top (grille area), one plastic clip (each side) at bumper cover top side returns, four 10mm head self-tapper on inner guard (each side), three plastic clips along bottom of bumper cover. Pull bumper cover outward at sides to release off clips.
4. Remove steel chassis cross member from front of chassis, four 14mm nuts. **See figure 1.**  
**On 4WD models:** Remove two plastic clips from plastic under body guard (each side).
5. **On 4WD models** trim plastic air deflectors at top of cross member. **See figure 2.**
6. Remove four bumper cover support brackets from vehicle. **See figure 3.**
7. Remove headlight / indicator assemblies from vehicle. Three 10mm head self-tappers and one 10mm head bolt. Disconnect wiring as removing. **See figure 4.**
8. Remove plastic bumper cover support brackets from bottom of headlight. Two PK screws (per light). **See figure 5**
9. Remove plastic bumper cover side supports from each guard. One 10mm head self-tapper. **See figure 6**
10. Connect ECB Quick Click wiring harness (supplied) to original wiring loom. Refit headlight / indicator assemblies connecting to the other side of the wiring harness. Run wiring harness out from under headlight ensuring it is clear of all sharp edges and pinch points.
11. Fit steel mounting brackets (supplied) to outside of chassis. **NOTE:** Welded spacer plate to inside. Use M12 x 35 x 1.25 bolts, flat and spring washers (supplied) and M8 x 30 x 1.25 bolts, flat and spring washers (supplied) into captive nuts in chassis. **FINGER TIGHTEN ONLY. See figure 7.**
12. Place 3/8 flat washer (supplied) and 75x50x8 steel plate (supplied) over 3/8 x 4 bolt (supplied). Slide 52mm long steel chassis spacer pipe (supplied) over bolt. **See figure 8.** Slide through chassis and steel mounting bracket. Use 3/8 flat washer, spring washer and nut (supplied). **FINGER TIGHTEN ONLY.**
13. Fit chassis cross member (supplied) to original studs on chassis. Use original nuts. **FINGER TIGHTEN ONLY.** Use 3/8 x 1 1/2 bolts, nuts and flat and spring washers (supplied) to attach cross member to steel mounting brackets. **FINGER TIGHTEN ONLY. See figures 9 and 10.**
14. Tighten M12 x 35 x 1.25 bolts firm only. Level steel mounting brackets off front edge. **See figure 11.**  
**TIGHTEN ALL BOLTS / NUTS** (as per the below sequence) ensuring steel mounting brackets remain



**WORLD'S BEST  
ALLOY BULLBARS**

**East Coast Bullbars (ECB Pty Ltd)**

Tel: 07 3897 5700

Fax: 07 3283 1168

ecb@ecb.com.au www.ecb.com.au

29 Snook St  
Clontarf QLD 4019  
Australia

Po Box 122  
Margate QLD 4019  
Australia

centralised with vehicle and are correct distance apart for alloy protection bar to mount on outside of steel mounting brackets.

Mount bolt tighten sequence:

- a) **TIGHTEN** M12 x 35 bolts first.
  - b) Centralize cross member and **TIGHTEN** original 14mm nuts on cross member studs.
  - c) **TIGHTEN** 3/8 x 4 bolt/nut **FIRM ONLY** – 75x 50 steel plate in vertical position.
  - d) Align steel mounting brackets level at sides and with enough distance apart for protection bar to mount on outside of steel mounting brackets. **See figure 12. TIP:** Tighten 3/8x 1½ bolt/nut **FIRM ONLY** then tap mounts into position.
  - e) **TIGHTEN** 3/8 x 1 ½ bolts and nuts from cross member to steel mounting brackets.
  - f) **TIGHTEN** 3/8 x 4 bolts/nuts. Ensure 75x50 steel plate is in vertical position.
  - g) **TIGHTEN** M8 x 30 bolts.
15. Fit LED indicator / park lights (supplied) into protection bar as per instructions supplied with the LED indicator kit. **NOTE: Ensure park light is to outside. See figure 13.**
  16. Attach infill trims (supplied) to protection bar. Use M6 nyloc nuts and flat washers (supplied) **FINGER TIGHTEN ONLY. See figure 14.**
  17. Attach 6mm clip lock trim (supplied) to centre section of protection bar between infill trims. **See figure 15.**
  18. Fit protection bar to outside of steel mounting brackets. Use ½ x 1 ¾ bolts, nuts, flat and spring washers (supplied). **FINGER TIGHTEN ONLY.**
  19. Align protection bar with vehicle ensuring a gap of 10 to 12mm between protection bar and guard / flare at sides. **See figure 16** for side view and **figure 17** for front view **TIGHTEN ALL BOLTS.** Impact wrench access is from grille area. **NOTE:** A 10mm to 12mm gap each side is critical to allow for body/chassis twist in rough terrain.
  20. Connect indicator / park light wiring and **CHECK OPERATION.**
  21. Carefully drill three 3/16 holes in lower lip on grille, one in centre and one each side, refit grille to vehicle. Zip tie bottom of grille to head light / indicator assemblies and to steel bracket in centre. **See figures 18 and 19.**
  22. Align infill trims with vehicle and protection bar. **TIGHTEN NUTS FIRM ONLY – DO NOT OVERTIGHTEN.**
  23. Fit inner guard bracket (supplied) to lower radiator support using one 10mm head bolt from lower bumper mounts to radiator support and one M6x20 bolt, washer and nyloc nut (supplied)per side. **See figure 20.** Secure outer hole in liner to inner guard bracket with bolt supplied M6 x 20 bolt, washers and nyloc nuts (supplied). Then secure second hole in inner guard bracket to liner with M6 x 20 bolt , washer and nyloc nut (supplied), ensure this is not pulled to tight as it may cause liner to tear. **TIGHTEN** bolts and trim any excess liner off. On passenger side ensure washer bottle stays covered after trim. **See figure 21.**

#### **ENSURE NUMBER PLATE IS CLEARLY VISABLE**

**Note:** When fitting/refitting the licence plate to the vehicle, ensure there is no obstruction to licence plate vision in accordance with local authorities. If required relocate licence plate to an alternate location.



**WORLD'S BEST  
ALLOY BULLBARS**

**East Coast Bullbars (ECB Pty Ltd)**

Tel: 07 3897 5700

Fax: 07 3283 1168

ecb@ecb.com.au www.ecb.com.au

29 Snook St  
Clontarf QLD 4019  
Australia

Po Box 122  
Margate QLD 4019  
Australia

**Further VFPS Notes:**

- a) Do not attach VFPS to the vehicle using anchorages not intended for this purpose (e.g. engine mounting bolts).
- b) Do not use this product for any vehicle make or model, other than those specified by the VFPS manufacturer.
- c) Do not remove the plaque or label from the VFPS.
- d) Do not modify the structure of the VFPS in any way.
- e) No accessory or fitment should project forward of the VFPS forward profile.
- f) **ENSURE THESE INSTRUCTIONS ARE LEFT WITH VEHICLE OWNER AND/OR OPERATOR.**

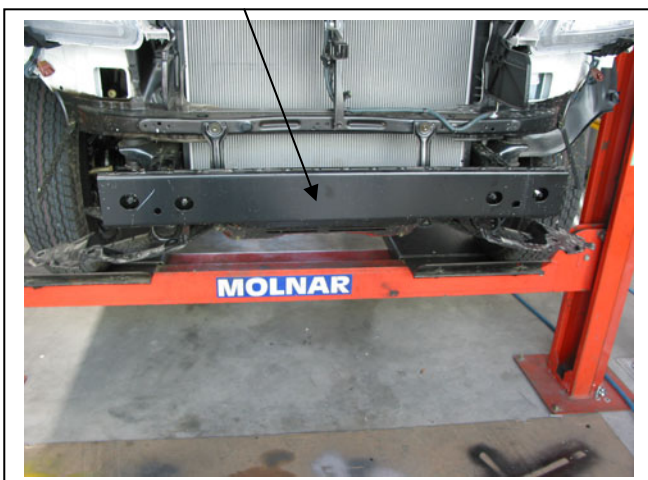
**IMPORTANT INFORMATION**

Periodically check bolts and nuts for correct tightness, especially if travelling on rough roads

**FITTING KIT**

1 – Pair steel mounting brackets	4 – 3/8 nuts
1 – Steel cross member	6 – 1/2 x 1 3/4 bolts
2 – Steel inner guard brackets	14 – 1/2 flat washers
2 – 75 x 50 x 8 steel plates with 10mm hole	8 – 1/2 spring washers
2 – 10nb tube spacer, 52mm long	6 – 1/2 nuts
2 – M12 x 35 x 1.25 bolts	6 – M6 x 20 bolts
2 – M8 x 30 x 1.25 bolts	18 – M6 flat washers
2 – M8 flat washers	12 – M6 nyloc nuts
2 – M8 spring washers	1 – indicator park light kit
2 – 3/8 x 4 bolts	1 – Pair infills (IC11LUXINFL)
2 – 3/8 x 1 1/2 bolts	1 – Quick Click Indi / Park kit (IC11HILLED100H)
8 – 3/8 flat washers	1 – 1100mm length, 6mm clip lock trim
4 – 3/8 spring washers	3 – 150mm zip ties

Remove cross member



**Figure 1**



**Figure 2:** Trim lower section from air dam. Passengers side shown.



**WORLD'S BEST  
ALLOY BULLBARS**

**East Coast Bullbars (ECB Pty Ltd)**

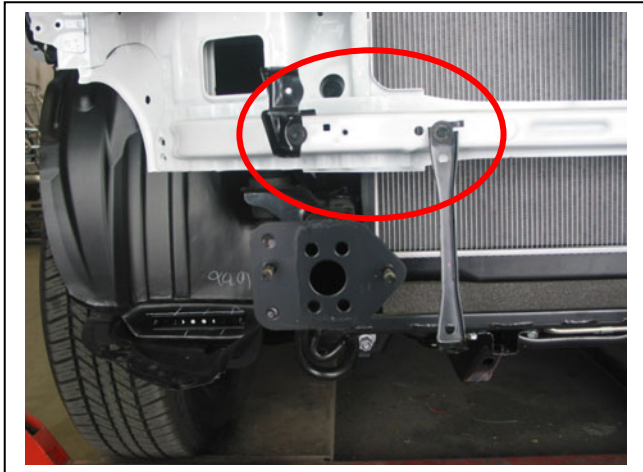
Tel: 07 3897 5700

Fax: 07 3283 1168

ecb@ecb.com.au www.ecb.com.au

29 Snook St  
Clontarf QLD 4019  
Australia

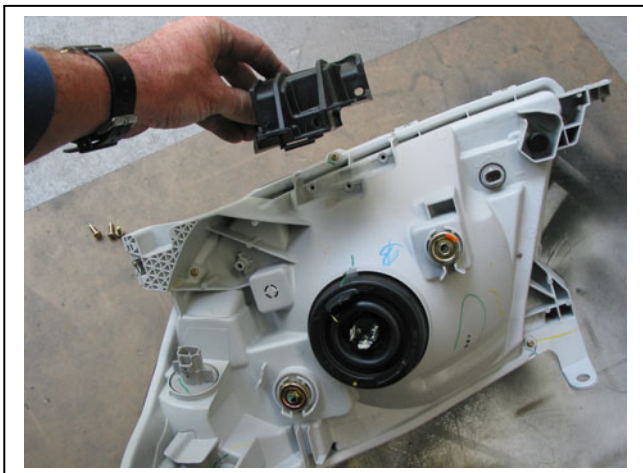
Po Box 122  
Margate QLD 4019  
Australia



**Figure 3 – Drivers side shown**



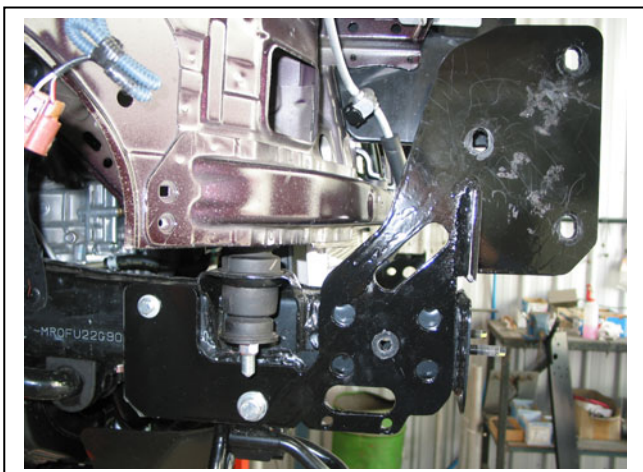
**Figure 4 – Remove headlight**



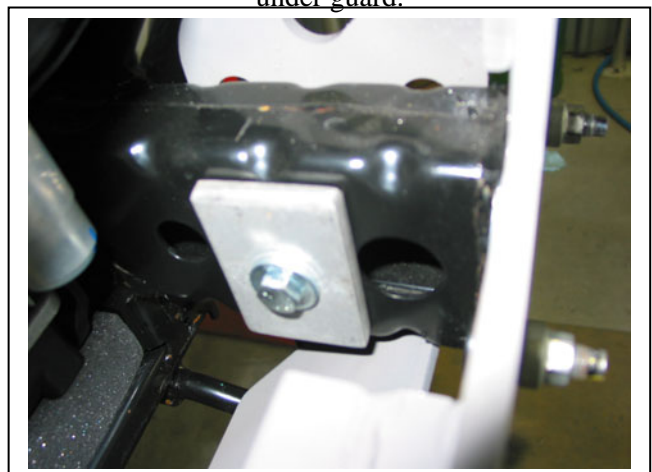
**Figure 5 – Removing trim from lower headlights**



**Figure 6 - Remove plastic bumper support from under guard.**



**Figure 7**



**Figure 8 – Washer straight to vehicle**



East Coast Bullbars (ECB Pty Ltd)

Tel: 07 3897 5700

Fax: 07 3283 1168

ecb@ecb.com.au www.ecb.com.au

WORLD'S BEST  
ALLOY BULLBARS

29 Snook St  
Clontarf QLD 4019  
Australia

Po Box 122  
Margate QLD 4019  
Australia

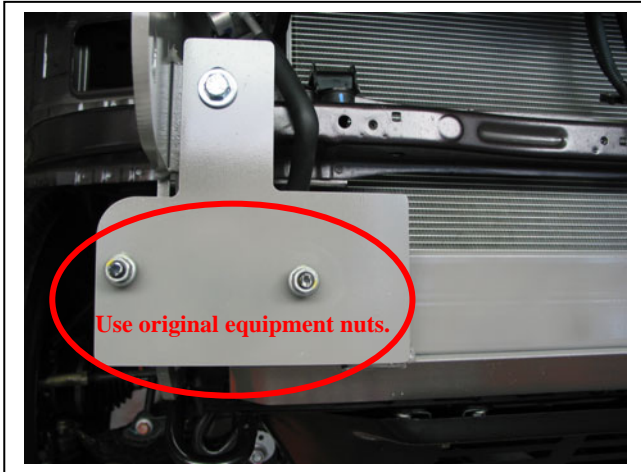


Figure 9



Figure 10 – Steel mounts fitted



Figure 11 - Passenger side shown  
Levelling off front edge

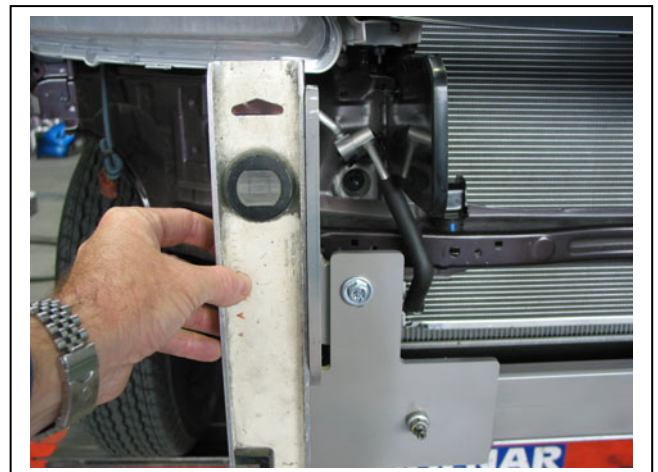
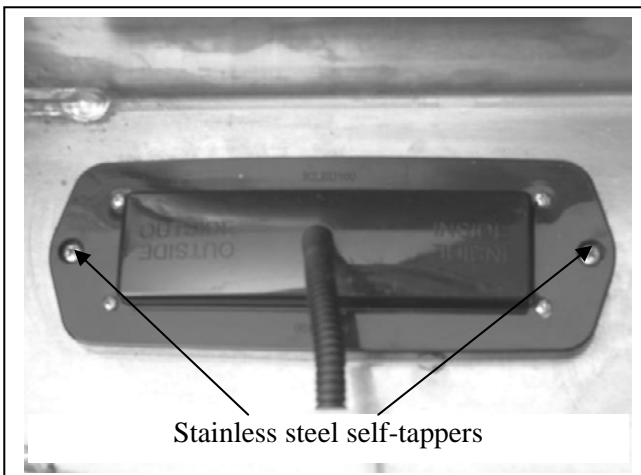


Figure 12 - Drivers side shown  
Levelling at sides



Stainless steel self-tappers

Figure 13



Figure 14 – Finger tighten only at this time



**WORLD'S BEST  
ALLOY BULLBARS**

**East Coast Bullbars (ECB Pty Ltd)**

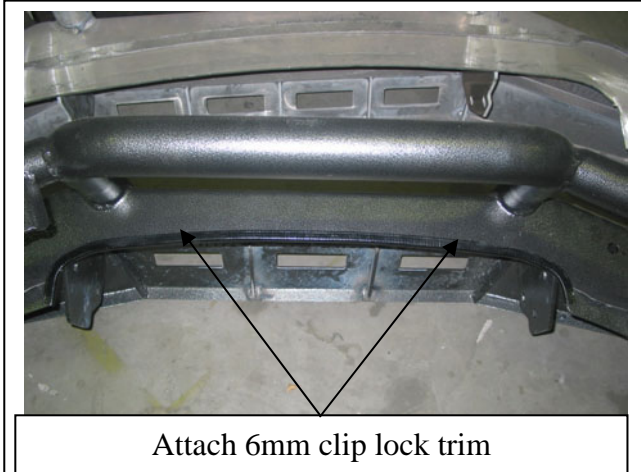
Tel: 07 3897 5700

Fax: 07 3283 1168

ecb@ecb.com.au www.ecb.com.au

29 Snook St  
Clontarf QLD 4019  
Australia

Po Box 122  
Margate QLD 4019  
Australia



Attach 6mm clip lock trim

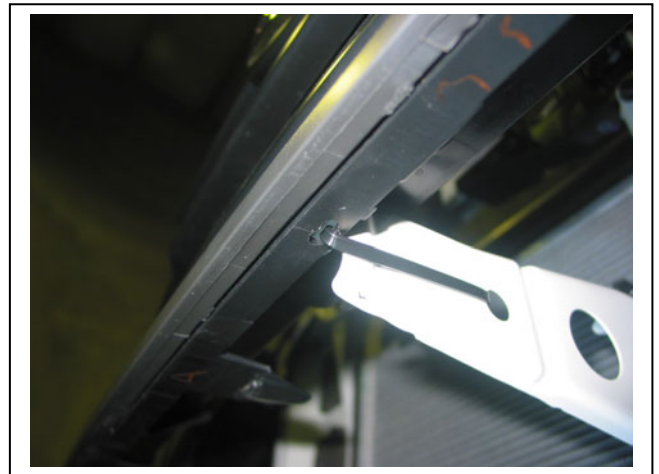
**Figure 15**



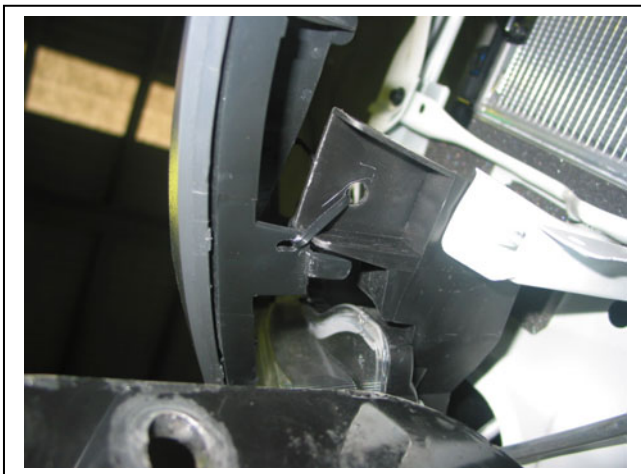
**Figure 16**



**Figure 17**



**Figure 18 – Centre grille attach point**



**Figure 19 – Side grille attachment point. Drivers side shown.**



**Figure 20 –Drivers side shown**



**WORLD'S BEST  
ALLOY BULLBARS**

**East Coast Bullbars (ECB Pty Ltd)**

Tel: 07 3897 5700

Fax: 07 3283 1168

ecb@ecb.com.au www.ecb.com.au

29 Snook St  
Clontarf QLD 4019  
Australia

Po Box 122  
Margate QLD 4019  
Australia



**Figure 21** –Passengers side shown



**WORLD'S BEST  
ALLOY BULLBARS**

**East Coast Bullbars (ECB Pty Ltd)**

Tel: 07 3897 5700

Fax: 07 3283 1168

[ecb@ecb.com.au](mailto:ecb@ecb.com.au) [www.ecb.com.au](http://www.ecb.com.au)

29 Snook St  
Clontarf QLD 4019  
Australia

Po Box 122  
Margate QLD 4019  
Australia







WORLD'S BEST  
ALLOY BULLBARS

East Coast Bullbars (ECB Pty Ltd)

Tel: 07 3897 5700

Fax: 07 3283 1168

ecb@ecb.com.au www.ecb.com.au

29 Snook St  
Clontarf QLD 4019  
Australia

Po Box 122  
Margate QLD 4019  
Australia

## DESPATCH CHECKLIST BT126SY

Work Order #		<b>See other side of this page for photos of all mounts</b>
Finish:		
Transport:		
Due Date:		

- 1 – Pair steel mounting brackets (pair)
- 1 – Steel cross brace
- 2 – Inner guard brackets
- 2 – 75 x 50 x 8mm steel plate with 10mm hole in centre
- 1 – Bolt kit
- 1 – 1100mm length, 6mm clip lock trim
- 1 – LED Indicator / Park light kit.
- 1 – Pair Hilux infill trims. (IC11LUXINFL)
- 1 – Quick Click Indi / Park kit (IC11HILLED100H)
- 6 – 6mm air scoops – **Fitted to bar.**
- 1 – ECB Pair Overriders – **Fitted to Bar**



Is this product “the best it can be” Yes \_\_\_\_\_ / \_\_\_\_\_  
Wrapper's initials / Checker initials

If NO fix before continuing

All parts checked and completed by:

Nut and bolts: \_\_\_\_\_ Date \_\_/\_\_/\_\_

Order control: \_\_\_\_\_ Date \_\_/\_\_/\_\_

Final wrap check: \_\_\_\_\_ Date \_\_/\_\_/\_\_



East Coast Bullbars (ECB Pty Ltd)

Tel: 07 3897 5700

Fax: 07 3283 1168

ecb@ecb.com.au www.ecb.com.au

29 Snook St  
Clontarf QLD 4019  
Australia

Po Box 122  
Margate QLD 4019  
Australia

WORLD'S BEST  
ALLOY BULLBARS

